

One Skein Arches Cowl



**Designed by
Deja Jetmir**

Skill level: Easy

Materials:

1 skein Cascade Yarns Lana Grande 100% Peruvian Highland Wool in color 6033

- 100 grams/ 87 yards
- Substitute with super bulky weight yarn

Blocking wires or pins if blocking cowl.

Crochet Hook: 10mm

Gauge: Not Blocked 3"=almost 1 completed arch x 3 completed arch rows

Finished Measurements: approx.. 21" wide x 6" high

Watch a video tutorial for this pattern at: www.crocheteveryafter.com

CH 44, leave a long tail for sewing up cowl.

Row 1: Turn, beginning in 2nd CH from hook, SC in each ST across.

Row 2: Turn, CH 1, SC in next 2 STS, CH 3, skip next 3 STS, *SC in next 3 STS, CH 3, skip next 3 STS*; repeat from * to * across, ending with a SC in each of last 2 STS.

Row 3: Turn, CH 1, SC in first SC of row below, * skip next ST, DC 5 times in CH 3 space, skip next ST, SC*; repeat from * to * across, ending with SC in last ST.

Row 4: Turn, CH 1, SC in first SC of row below, CH 1, skip next ST, SC in each of next 3 DC of row below, *CH 3, skip next 3 STS, SC in next 3 STS*; repeat from * to * across to last 2 STS, CH 1, skip next ST, SC in last ST.

Row 5: Turn. CH 3, skip first SC of row below, DC 2 times in CH 1 space, skip next ST, SC in next ST, skip next ST, *DC 5 times in CH 3 space, skip next ST, SC in next ST, skip next ST*; repeat from * to * across, ending with DC 2 times in CH 1 space, DC in last ST.

Row 6: Turn. CH 1, SC in next 2 STS, CH 3, skip next 3 STS *SC in next 3 DCs of row below, CH 3, skip next 3 STS*; repeat from * to * across, ending with SC in last DC of row below, SC in top of CH 3.

Rows 7-9: Repeat **Rows 3-5**.

Row 10: Turn, CH 1, SC in each ST across. Fasten off.

Blocking

Soak cowl in a mild detergent (we recommend Soak brand wash) for 10 mins. Then use blocking wires or pins, pull cowl into shape and secure to a firm surface. Let dry completely before sewing.

Sewing

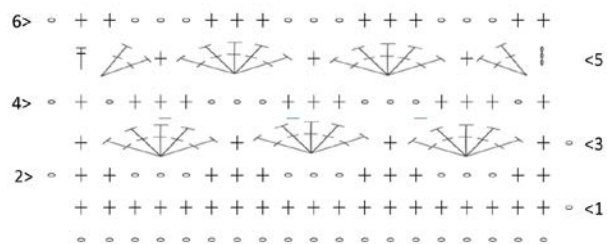
Fold cowl in half and using tail, perform a mattress stitch to sew cowl closed.

Abbreviations used:

CH: chain; SC: single crochet; DC: double crochet; ST(S): stitch(es)



Finished Product Sewn and laying flat



Stitch Diagram