



# CHORUS COWL



## DESIGNED BY DEJA JOY

**Skill Level:** Intermediate

**Materials:**

Approx. 325 yards Kollage Riveting Sport in Citrine (7924)

Approx. 325 yards Kollage Riveting Sport in Orchid (7925)

- 100g/ 350 yards per hank
- Substitute with any sport weight yarn

Yarn needle

**Crochet Hook:** 4mm [US-F/G]

**Gauge:** 4" = 18 sts and 24 rows in Section A pattern.

**Finished Measurements:** approx. 40" around x 12" tall

**Special Instructions:**

- Read through pattern before beginning.
- The 4mm hook will be called either a F or G depending on the manufacturer. Choose the hook by mm size, not letter.
- Join colors at the last ST before color is asked to be joined.
- Repeats are shown in grey on the charts on the last page.



## Cowl Instructions

With **CA**, CH 180, join RND with SL ST in 1st CH.

### Section A

**RND 1:** CH 1, SC in same ST as CH 1 and in each CH around. Join RND with SL ST in 1st SC.

**RND 2:** CH 1, SC in same ST as CH 1, CH 1, skip next ST, \*SC in next ST, CH 1, skip next ST; repeat from \* around. Join RND with SL ST in 1st SC.

**RND 3:** CH 1, SC in same ST as CH 1, SC in next ST, \*CH 1, skip next ST, SC in next ST; repeat from \* around. Join RND with SL ST in 1st SC.

**RNDs 4-23 :** Repeat **RNDs 2 and 3**.

### Section B

**RND 24:** With **CB**, CH 1, SC in same ST as CH 1 and in each ST around. Join RND with SL ST in 1st SC.

**RND 25:** With **CA**, CH 1, SC in same ST as CH 1 and in next 2 STS, HDC in next ST, DC in next 5 STS, HDC in next ST, \*SC in next 3 STS, HDC in next ST, DC in next 5 STS, HDC in next ST; repeat from \* around. Join RND with SL ST in 1st SC.

**RND 26:** Repeat **RND 25**.

**RND 27:** With **CB**, CH 1, SC in same ST as CH 1, SC spike ST in SC three rounds below (**RND 24**), SC in next 8 STS, \*SC in next ST, SC spike ST in SC three rows below, SC in next 8 STS; repeat from \* around. Join RND with SL ST in 1st SC.

**RND 28:** CH 1, SC in same ST as CH 1 and in each ST around. Join RND with SL ST in 1st SC.

**RND 29:** With **CA**, CH 3 (counts as a DC), DC in next 3 STS, HDC in next ST, SC in next 3 STS, HDC in next ST, \*DC in next 4 STS, HDC in next ST, SC in next 3 STS, HDC in next ST, DC in next ST; repeat from \* around. Join RND with SL ST in top of CH 3.

**RND 30:** Repeat **RND 29**.

**RND 31:** With **CB**, CH 1, SC in same ST as CH 1, SC in next 5 STS, SC spike ST in SC three rounds below (**RND 28**), SC in next 3 STS, \*SC in next 6 STS, SC spike ST in SC three rounds below, SC in next 3 STS; repeat from \* around. Join RND with SL ST in 1st SC.

**RND 32:** CH 1, SC in same ST as CH 1 and in each ST around. Join RND with SL ST in 1st SC.

**RNDs 33-40:** Repeat **RNDs 25-32** once more.

**RNDs 41-43:** Repeat **RNDs 25-27**.

Fasten off **CA**.

### Section C

**RND 44:** With **CB**, CH 3 (counts as a DC), skip next 3 STS, \*(DC 2 times, CH 3, DC 2 times) all in next ST, skip next 3 STS; repeat from \* around to beginning ST, (DC 2 times, CH 3, DC) all in beginning ST where CH 3 was made (chart shows this stitch group in red with an arrow pointing to it). Join RND with SL ST in top of CH 3.

**RND 45:** CH 3 (counts as a DC), skip next 2 DCs \*(DC 2 times, CH 3, DC 2 times) all in next CH 3 space, skip next 4 DCs; repeat from \* around to last CH 3 space, (DC 2 times, CH 3, DC) all in last CH 3 space. Join RND with SL ST in top of CH 3.

**RNDs 46-50:** Repeat **RND 45**.

**RND 51:** CH 1, SC in same ST and in each ST around (making 3 SCs in each CH 3 space). Join RND with SL ST in 1st SC.

Fasten off and weave in ends.

### Abbreviations Used:

**CH-** chain

**DC-** double crochet

**HDC-** half double crochet

**RND-** round

**SC-** single crochet

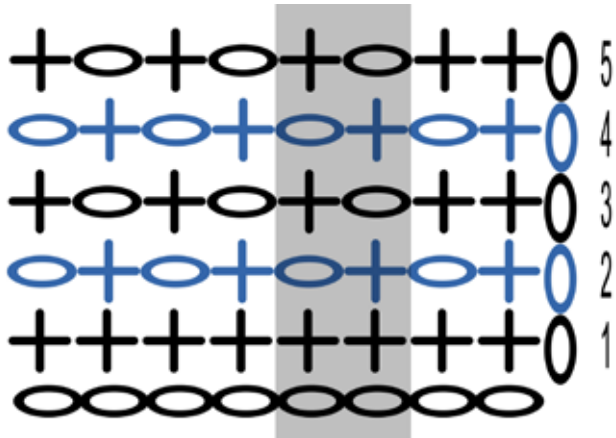
**SC spike stitch-** insert your hook three rows below, into the top two loops of the SC (where the row above that ST was working into), pull loop up to the height of the rest of the stitches of your current row and finish the single crochet.

**SL ST-** slip stitch

**ST(S)-** stitch(es)

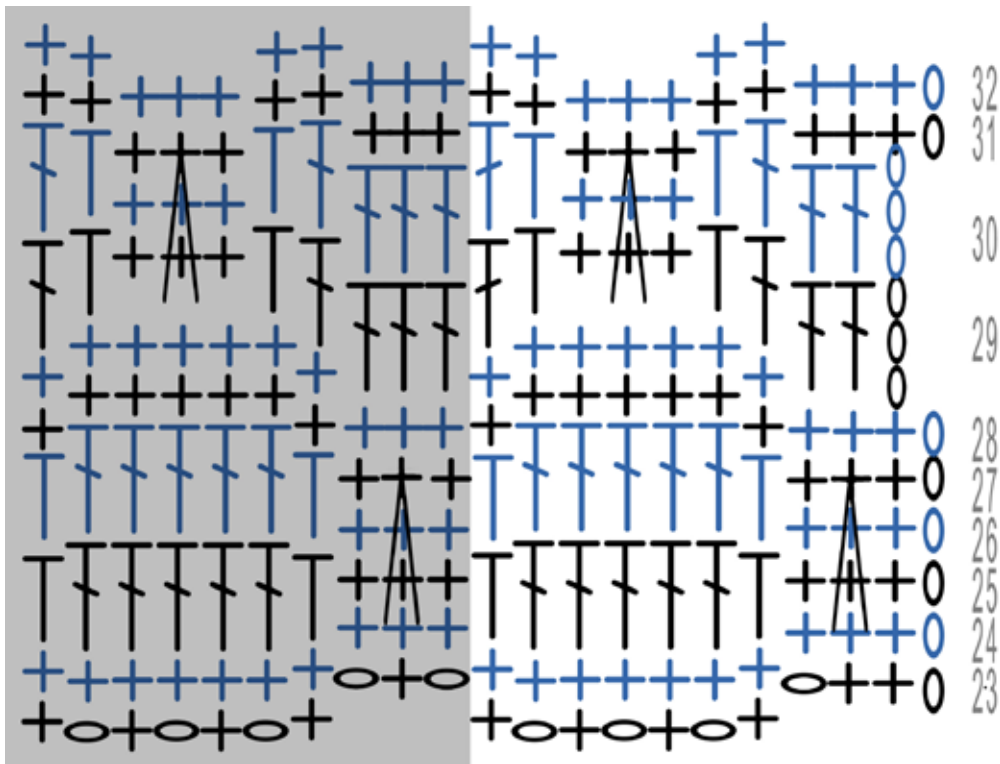


### Section A Chart



Stitch Legend	
	ch: chain
	dc: double crochet
	hdc: half double crochet
	sc spike
	sc: single crochet

### Section B Chart



### Section C Chart

