



# STEP UP SHRUG



## DESIGNED BY DEJA JOY

**Skill Level:** Easy

**Materials:**

Approx. 400 yards of Knit Picks Brava Worsted in Cream (25695)

- 100 grams/218 yards per skein
- Substitute with any medium worsted weight yarn

yarn or tapestry needle

**Finished Measurements:**

- XSmall: 23" wide (from sleeve edge to sleeve edge) x 13" long (before sewing the sleeves)
- Small: 25" x 14.5"
- Medium: 27" x 16"
- Large: 29" x 17.5"
- XLarge: 31" x 19.5"

**Crochet Hook (all sizes):** 5.5mm [US-I]

**Gauge:** 4" = 13 STS and 8 rows

**Special Instructions:**

- Read through entire pattern before beginning.
- CH 3 counts as a DC throughout.
- Instructions are written for size XSmall with other sizes in parenthesis.
- View video tutorials on all techniques used in this pattern at:

[www.knitandcrocheteveryafter.com/tutorials](http://www.knitandcrocheteveryafter.com/tutorials)



## Shrug Instructions

CH 73 (79, 85, 91, 97)

**Row 1:** Turn, DC in 4th CH from hook, DC in next 4 STS, \*CH 1, skip next CH, DC in next 5 CHS\*; repeat from \* to \* across to end of row. 71 STS (77, 83, 89, 95)

**Row 2:** Turn, CH 4 (counts as a DC and CH 1), skip next ST, DC in next 5 STS, \*CH 1, skip next ST, DC in next 5 STS\*; repeat from \* to \* across to last 4 STS, CH 1, skip next ST, DC in last 3 STS. 71 STS (77, 83, 89, 95)

**Row 3:** Repeat Row 2. 71 STS (77, 83, 89, 95)

**Row 4:** Turn, CH 3, DC in next 4 STS, \*CH 1, skip next ST, DC in next 5 STS\*; repeat from \* to \* across to end of row. 71 STS (77, 83, 89, 95)

**Row 5:** Turn, CH 3, DC in next 2 STS, \*CH 1, skip next ST, DC in next 5 STS\*; repeat from \* to \* across to last 2 STS, CH 1, skip next ST, DC in last ST. 71 STS (77, 83, 89, 95)

**Row 6:** Repeat Row 5. 71 STS (77, 83, 89, 95)

**Row 7:** Repeat Row 4. 71 STS (77, 83, 89, 95)

**Rows 8-26 (29, 32, 35, 39):** Repeat Rows 2-7. Fasten off and weave in ends. 71 STS (77, 83, 89, 95)

### Note:

- XSmall will end with a **Row 2** repeat.
- Small will end with a **Row 5** repeat.
- Medium will end with a **Row 2** repeat.
- Large will end with a **Row 5** repeat.
- XLarge will end with a **Row 3** repeat.

### Finishing

Fold rectangle so the ends butt up to each other lengthwise and with a length of yarn, mattress stitch up 4 inches on each end to form sleeves. Fasten off and weave in ends.

### Inside Edging

With slip knot on hook, join at the corner of either end of large hook where your arms will go in when wearing. Single crochet around the entire circle once. Fasten off and weave in ends.

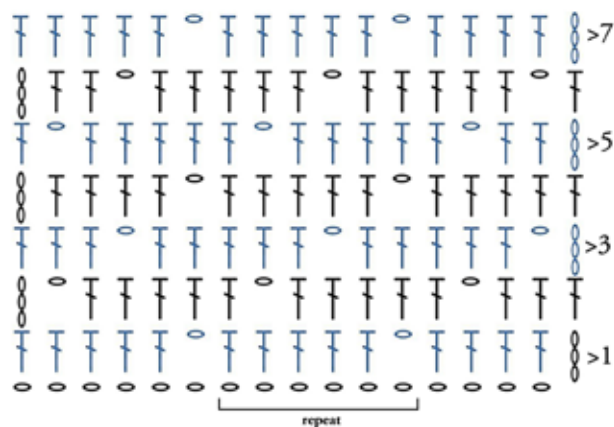
## Sleeve Edging (perform on each sleeve)

With slip knot on hook, join yarn at bottom of sleeve.

**RND 1:** CH 1, SC evenly around entire sleeve. Join RND with SL ST.

**RNDs 2-3:** CH 1, SC in each ST around. Join RND with SL ST. Fasten off and weave in ends.

## Shrug Chart



Stitch Legend	
	Chain
	Double Crochet

### Abbreviations Used:

**CH-** chain  
**SC-** single crochet  
**DC-** double crochet  
**RND-** round  
**SL ST-** slip stitch  
**ST(S)-** stitch(es)  
**\*...\*** - stitch repeat, work the stitches contained within the asterisks the amount of times as stated directly after the repeat.