



MIDNIGHT CABLED COWL



DESIGNED BY DEJA JOY

Skill Level: Intermediate

Materials:

275 yards of Red Heart Boutique
Unforgettable in Dragonfly (3935)

- 100 g/280 yards per skein
- substitute with medium worsted weight yarn

Yarn or tapestry needle

Crochet Hook: 5.5mm [US-I]

Gauge: 2" = 8 STS and 9 rows (in SC in BLO)

Finished Measurements: Approx. 6" across x
34" around

Special Instructions for Pattern:

- Read through pattern before beginning.
- Don't make your cables tight. Lift up slightly with each loop you make so they are long enough to span the 3 rows of SC in BLO.
- See crochet tutorials at:

<http://knitandcrocheteveryafter.com>



Cowl Instructions

CH 25

Row 1: Turn, beginning in 2nd CH from hook, SC in each CH across. 24 STS

Rows 2-4: Turn, CH 1, SC in BLO in each ST across. 24 STS

Row 5: Turn, CH 1, SC in BLO in next 8 STS, skip next 4 STS, FPDTR around the next 4 SCs of **Row 1** below, go back to skipped 4 STS and FPDTR around the 4 SCs of **Row 1** below, SC in BLO in the last 8 STS. 24 STS

Rows 6-8: Turn, CH 1, SC in BLO in each ST across. 24 STS

Row 9: Turn, CH 1, SC in BLO in next 8 STS, FPTR around FPDTR of **Row 5** below for next 8 STS, skip next 8 STS of row below, SC in BLO in last 8 STS. 24 STS

Rows 10-12: Turn, CH 1, SC in BLO in each ST across. 24 STS

Row 13: Turn, CH 1, SC in BLO in next 7 STS, FPTR around FPTR of **Row 9** below for next 4 STS, skip next 4 STS of row below, SC in BLO in next 2 STS of Row 12, FPTR around FPTR of **Row 9** for next 4 STS, skip next 4 STS of row below, SC in BLO in last 7 STS. 24 STS

Rows 14-16: Turn, CH 1, SC in BLO in each ST across. 24 STS

Row 17: Turn, CH 1, SC in BLO in next 8 STS, FPTR around FPTR of **Row 13** below for next 8 STS, skip next 8 STS of row below, SC in BLO in last 8 STS. 24 STS

Rows 18-20: Turn, CH 1, SC in BLO in each ST across. 24 STS

Rows 21-162: Repeat **Rows 5-20**, ending with a Row 17 repeat. 24 STS

Fasten off with a long tail for sewing the cowl together.

Finishing

Bring the two ends of the cowl together, using the long tail, whipstitch the two ends together. Weave in ends.



Abbreviations Used

CH- chain

DC- double crochet

FPDTR- front post double treble crochet

FPTR- front post treble crochet

RND- round

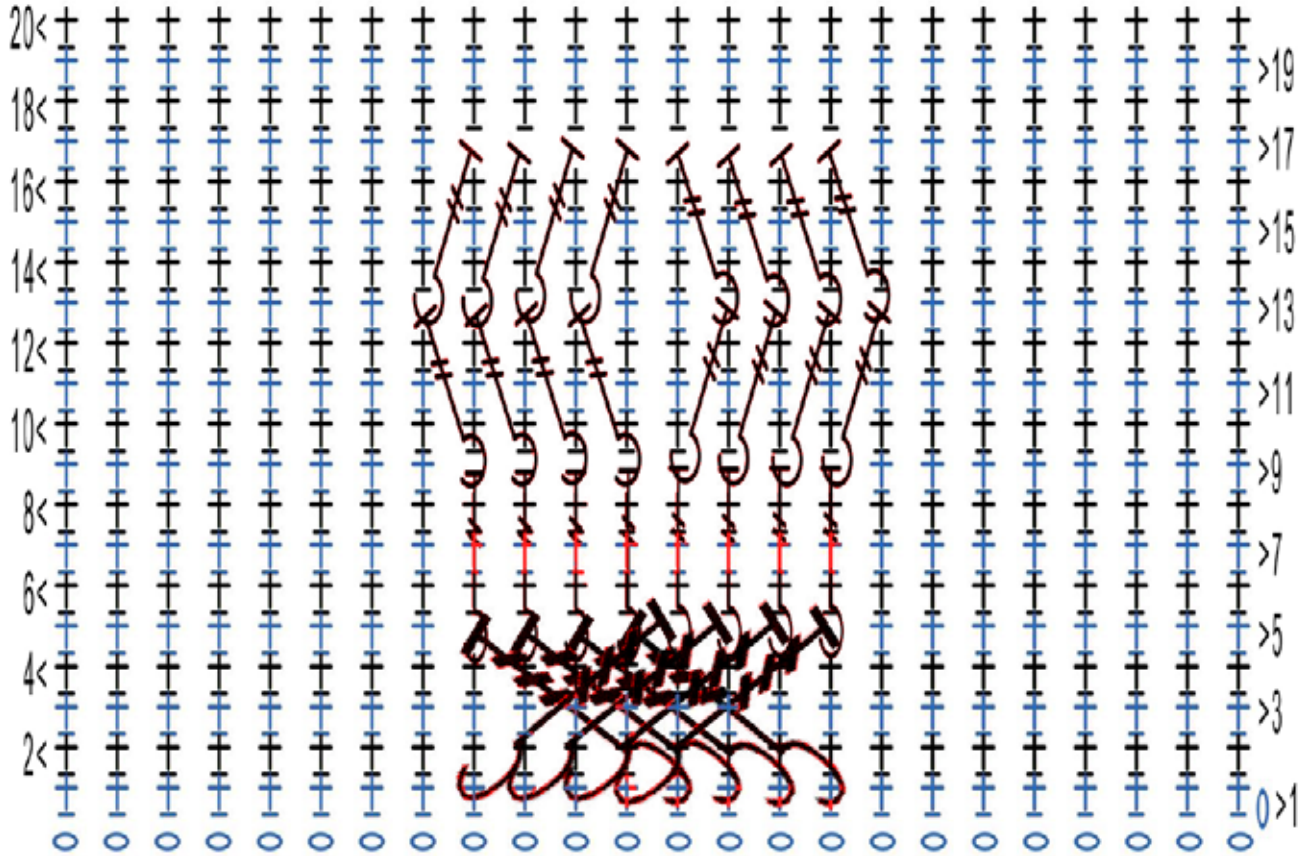
SC- single crochet

SC in BLO- single crochet in back loop only

ST(S)- stitch(es).



Cowl Chart



Note: The cable stitches are highlighted in red to make it easier to see where they overlap the SC in BLO rows.

Stitch Legend	
	CH- chain
	FPTR- front post treble crochet
	FPDTR- front post double treble crochet
	SC in BLO- single crochet in the back loop only